

It is a device that emulates human breathing. Both the breathing frequency and the volume of exhaled air can be regulated. The main function of this machine is to perform dynamic resistance tests and to determine the CO₂ in the inhalation air according to the standards EN 149, EN 136, EN 140, EN 13274-3 and EN 13274-6.

General description of the system.

Key Features:

- Dynamic breathing resistance test.
- Test of CO₂ concentration in inhalation and exhalation (half masks).
- Test of CO₂ concentration in inhalation and exhalation (full masks)

Calibration tests:

- Air volume calibration.
- Calibration with standard tube.
- CO₂ calibration

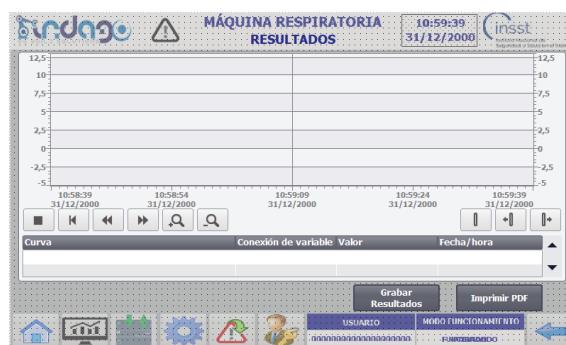
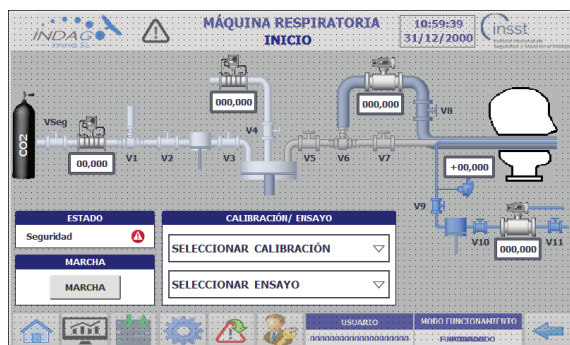
The control device was developed as a necessary instrument for laboratories responsible for testing masks for personal protective equipment..

The system operation integrates different instruments, so that the equipment is able to automatically generate reports on test and calibration performed.

El Interfaz es claro y sencillo, dispone de diferentes pantallas para cada uno de los tipos de The interface is clear and simple, with different screens for each type of test and calibration performed by the machine.

Intelligent machine capable of self-regulating its speed and executing the test with the programmed number of strokes per minute.

Communication between these instruments makes it possible to visualize the results in real-time.



Respiratory Machine RM-RCO2 (Model: 13274)

CSC INGENIERÍA

Device for quality control and testing of breathing masks (PPE)
according to EN 13274-6 and EN 13274-3.

Wide range of performance:

- 10 to 40 strokes/minute adjustable in intervals of 1 unit.
- Air volume: 1 to 2.5 litres, adjustable in 0.25 litre intervals.
- CO2 percentage: 4-5.5% in 0.5% increments.

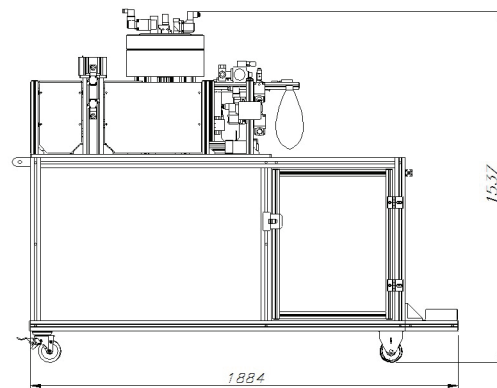
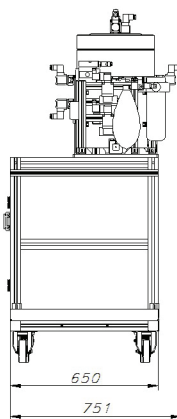
No installation is required, and the system is easy to start up, which means that the system can be up and running in a short space of time..

SPECIFICATIONS:

DESIGN ACCORDING TO THE FOLLOWING STANDARDS:

- | | |
|----------------------------|----------------------------------|
| ■ Supply voltage : 230 VAC | ■ 2006/42/EC Machinery Directive |
| ■ Working pressure: 6 bar. | ■ EN 13274-6 |
| ■ Flow rate: 750 l/min | ■ EN 13274-3 |
| | ■ EN 149 |

Equipment and general dimensions:



Contact:

Address: C/Astrónoma Cecilia Payne M4.2 (PCT Rabanales 21) 14014 Córdoba

Telephones: (+34) 957 326 155 (+34) 653 857 507 Fax (+34) 957 348 146

Web: www.csgingenieria.es